

1. Sri Sri Ravishankar Vidya Mandir Trust

The school in Bangalore requires infrastructure support - the building of classrooms, multipurpose hall and toilets for boy and girl children.

2. Sri Sri College and Ayurvedic Science and Research Hospital

Funding of various medical equipment for the Ayurveda Hospital serving more people in rural areas of Bangalore and surroundings.

Proposal for Support from Timken India for Sri Sri Ravishankar Vidya Mandir Trust - School Construction

The purpose of our work is to directly benefit the underprivileged people of the society and thereby have a direct impact on the social-economic conditions of the individuals, their families and the society at large.

In 1981, The Art of Living International Ashram was been constructed near Udayapura. While the construction of the first few buildings began, there were children of the construction workers playing about in the sand and stones. Looking at this, Gurudev Sri Sri Ravi Shankar instructed the volunteers to teach these children about basic hygiene and how to read and write. What started as general classes in the evening, very soon grew into a proper school with uniforms and books and free mid-day meals and yellow school buses to pick up children from the nearby 53 villages. Acharya Ratnanand ji (Father of Gurudev Sri Sri Ravishankar) would go from house to house in the villages talking to people about the importance of sending their children to school. First, they sent children only for free food. Soon they saw the change in their attitude, awareness, confidence - and started appreciating the value of education.

The children enrolled on the school come from families of poor farmers, farm labourers. Most of the children are the first generation in the family to get formal education.

SL No	Description of Works	AREA in Sq.Ft
A	4 class rooms	400

B	First Floor Multipurpose Hall	1600
C	8 Toilets (4 for Boys and 4 for Girls separately)	500

Proposal for Support from Timken India for Sri Sri Ravishankar Vidya Mandir Trust.

The purpose of our work is to directly benefit the underprivileged people of the society and thereby have a direct impact on the social-economic conditions of the individuals, their families and the society at large. Our Sri Sri College and Ayurvedic Science and Research hospital is functioning for the last 15 years in the rural area of Bangalore catering to needy poor people of the Society. It is a 268 bedded hospital with moderate facilities serving through Ayurveda, Naturopathy, Yoga and such other holistic systems of medicine.

Approximately 350-400 patients visit daily in our outpatient department and 150 to 160 inpatients are our average bed occupancy. The hospital is ISO certified and NABH accreditation is under process. To complement our Ayurveda treatments, the hospital is being upgraded with modern types of equipment, instruments, technology in a medical care facility in diagnostics, therapeutics and other areas, wherever there is a synergy.

70 Ayurveda speciality doctors are serving in the institution in various specialities in Ayurveda like Shalya Tantra (Surgery) Kayachikitsa (General Medicine) Kaumarabhritya (Pediatric) etc.,

Every step of up-gradation in each speciality helps to serve more people in rural areas of Bangalore and its surroundings in an affordable way.

We, as a well known and established organization in the service of mankind through various programs and services, comply with all government regulations and meet the prescribed compliance to receive funds. Also, we will furnish all documents for your good office to avail of the related tax benefits. The following is the list of the equipment we are looking for at the Ayurveda Hospital. Following types of equipment, instruments are required at present for further up-gradation.

1. Sequential Compression Device

a. Lymphatic Drainage 12 Chambers: 4 units - Rs 10.4 Lakhs

Lymphatic Drainage aids in the removal of body toxins if the natural flow of lymphatic fluid is blocked due to cancer treatment surgery or radiation. In normal circumstances also better lymphatic fluid drainage aids in faster recovery from illness. The proper functioning of the lymphatic system is critical to our body's ability to drain fluids, detoxify, regenerate tissues, filter out toxins and foreign substances, and maintain a healthy immune system. Since it is a complex system comprised primarily of lymph vessels and nodes we need a 12 chamber overlapping system to aid the fluid flow which is complementary to manual lymph drainage.



b. DVT Preventive System 4 Chambers: 4 units – 3.6 Lakhs
Most hospital inpatients are at risk of deep vein thrombosis (DVT) and the associated complications of fatal or non-fatal pulmonary embolism and post- thrombotic syndrome. DVT is caused by immobilization of patient in the hospital setting. The blood clot formed in the lower limb can travel up and cause blockage of blood flow in other critical organs in the body (heart, brain , lungs). To prevent DVT compression device is used for mimicking the foot and calf muscle pump is required such as a 4 chamber system with various options of pressure cuffs aiding blood flow from veins which are far away from the heart (mostly both pair of legs).



2. Low-Intensity Super Illuminatus Diode Array Laser - Rs 21 Lakhs – General disease and disability conditions are associated with pain. Class 3B Laser systems are used to reduce pain and inflammation but the device is operator dependent and involves manual application. Array Laser uses Cuff Type of Probes Automatically illuminated at a particular wavelength responsible for pain relief The protocols are user friendly and can be selected across a range of indications from Foot, Knee, musculoskeletal pain.

3. Multiplace HyerBaric Oxygen Therapy Single Lock Chamber with 7 patient seats and 1 attender seat – Rs 138 Lakhs - Hyperbaric Oxygen Therapy (HBOT) when used as an adjunct treatment of modality can

- Reduce morbidity and mortality
- Aids in improved outcomes in complex surgical interventions
- Improve outcomes in Lower limb revascularisation (increase oxygenation in small vessel occlusions where the probability to revascularize is minimal) reduce foot amputations
- Improve the quality of life and hence aids in the resolution of copresented problems (for e.g. Non-Healing Wound & Infections – HBOT acts on both)

HBOT is widely used in the US, UK, Canada, China, Japan & Russia with more than 1000s of installations in each country and totalling more than 8000 installations worldwide.



4. 3D Footcare Scanner for customised foot insoles – Rs 4.6 Lakhs –

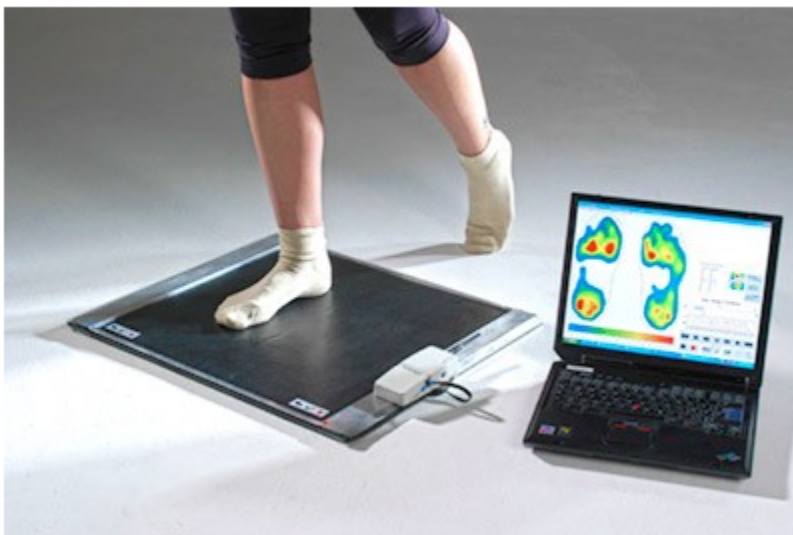
Our feet take a lot of stress, and when that stress isn't properly absorbed it can cause serious pain in our ankles, knees and hips. Quality insoles absorb shock, evenly distribute weight and provide arch support. To design a quality insole the 3-dimensional impression is

scanned by a laser scanner and converted as a digitized 3D image in the CAD Software for editing and correction.



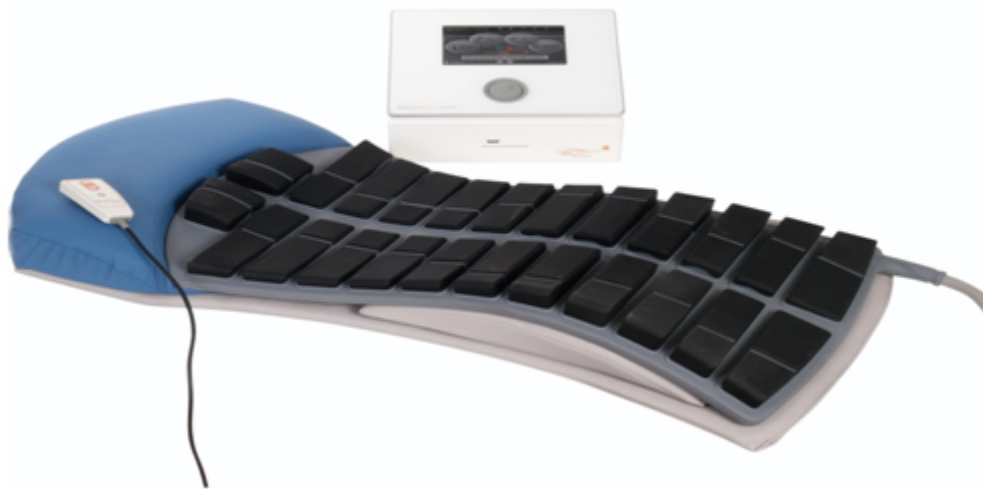
5. Pressure plate for Foot pressure assessment – Rs 5.8 Lakhs –

Due to stress on the feet and lower limb the plantar surface of the feet undergoes changes in hardness results in pain and discomfort while walking or running. The amount of pressure imbalance is measured and captured during gait (walking) and static (Stance position). The pressure assessment data is arrived at using the scanner and the details are shared with the insole making team to customize the insole based on the pressure loading pattern.



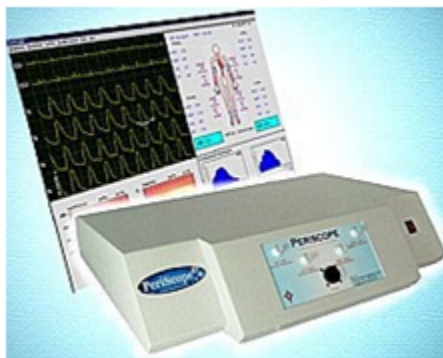
6. Dynamic Deep Muscle Stimulation Device – Rs 8.75 Lakhs

The patented Dynamic Deep Stimulation system is designed for back treatment in accordance with the latest technological advances in the field. The system contains a stimulation mat with 12 integrated channels, which are operated sequentially (meaning one after the other), administering complex waves to the back. This kind of stimulation opens new therapeutic ways to back treatment. It combines midfrequency electrostimulation and heat therapy and thereby offers multidimensional back stimulation. The dynamic deep waves enable intense muscle training which is experienced by the patient as a comfortable massage.



7. Non-Invasive Cardiac Risk Profiler & Analyser – Rs 7.5 Lakhs

Arterial Stiffness (AS) is of great interest in the prediction and management of cardiovascular events. The evaluation of AS using 2 points of measurement of the pulse wave velocity was of considerable increasing interest in the early 21st century. Novel apparatus is used such as Cardiac Risk Profiler & Analyser with 4 BP cuffs and ECG cable is able to detect the values automatically & determining arterial stiffness claimed superiority over pioneering methods either through greater simplicity of use, better repeatability, or a more pertinent arterial pathway.



8. Ambulatory Blood Pressure Monitor and Pulse wave Analyser – Rs 3.25 Lakhs

The importance of 24-hour ambulatory blood pressure monitoring in patients at risk of cardiovascular events. The accuracy of clinic blood pressure (BP) measurements is limited due to the presence of 24-hour BP variability and white-coat or masked hypertension. Various out-of-office measurements can be obtained using ABPM data, including morning, daytime, night-time and average 24-hour BP. Thus, in clinical practice, ABPM can be used to identify masked hypertension or excessive BP reduction. Furthermore, ABPM data can identify early-morning hypertension and excessive BP variability, both of which correlate with target-organ damage and cardiovascular outcomes. In large outcomes trials, ABPM sub-studies are increasingly performed to help further understand patient outcomes. However, it is evident that control of BP over the full 24-hour period, particularly during the risky early morning period, is not being achieved in general practice.